



Using Firebird with OpenOffice



Release
Version 1.1
25.02.04

Introduction

This document is to provide a framework for getting Firebird, JayBird (JDBC) and OpenOffice.org to work seamlessly. The original copy of this document, written by Art Fore with assistance by William L. Thomson can be found on the IBPhoenix site: http://www.ibphoenix.com/main.nfs?a=ibphoenix&page=ibp_howto14

Requirements

Firebirds Database Server	http://firebird.sourceforge.net	Version 1.5
JayBird - firebird-jca-jdbc-driver	http://sourceforge.net/project/showfiles.php?group_id=9028	Version 1.0.1
Java 2 Platform	http://java.sun.com/j2se/1.4.2	Version 1.4.2
OpenOffice.org	http://www.openoffice.org	Version 1.1

Installation of this software is beyond the scope of this document but proper documentation is available at the associated websites.

Installation Instructions

1. Install Firebird on the local system or on a server.
In this case Firebird is installed on a remote system (Server IP Address: 192.168.0.2)
2. Install Java and then OpenOffice enabling Java during installation (important for OOo to recognize Java).
In this case OpenOffice is running on Windows XP
3. Install the JayBird .jar files - you can put them anywhere but for convenience I've placed them in:
C:/Program Files/OpenOffice.org/program/classes/
4. Add the JayBird files to the OpenOffice classpath (Tools | Options | OpenOffice.org | Security)
5. Select the Browse button and then add the .jar files
6. Next configure your data source in OpenOffice.
(Tools | Datasource)
7. Select "New Datasource" to configure the JDBC driver for your FireBird database (Figure 1.1 & 1.2)
8. Under the General tab add the following information:
Name: (any unique identifier such as Firebird or Employees)
Database Type: JDBC
Data Source URL: firebirdsql:192.168.0.2/3050:/home/data/Databases/Interbase/products.gdb (Linux Server)
Data Source URL: firebirdsql:localhost/3050:c:\\Program Files\\Firebird\\examples\\employee.gdb (Windows)
9. Under the JDBC tab add the following information:
JDBC Drive Class: [org.firebirdsql.jdbc.FBDriver](http://sourceforge.net)
URL: should automatically fill using the Data Source URI under the General Tab
User Name: SYSDBA (or the user ID from your database) and Check the Password Required box.
10. Select the Tables tab. A dialogue box will ask for the password, enter your "password" and click OK. You should now see a list of tables. Click the Edit Table icon, you can see the fields, etc. Select the Queries tab, and you can create a query similar to Access.

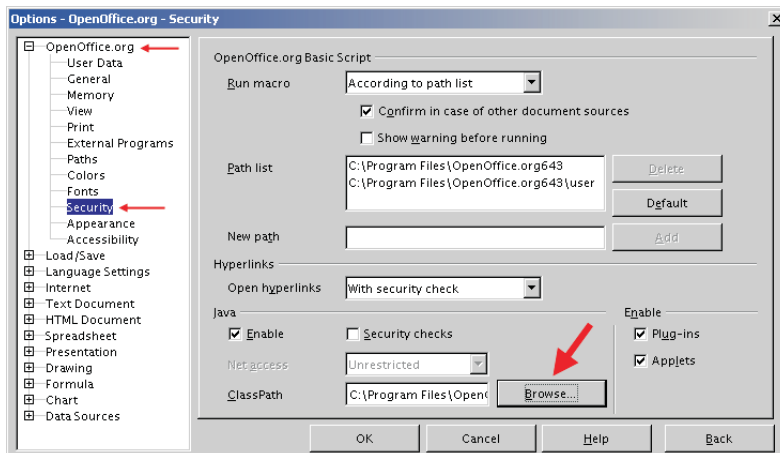


Figure 1.0: JayBird JDBC Classpath Installation in OpenOffice

The .jar Files

firebirdsql.jar
firebirdjmx.jar
mini-concurrent.jar
jaas.jar
mini-j2ee.jar
log4j-core.jar

www.methy1.ca

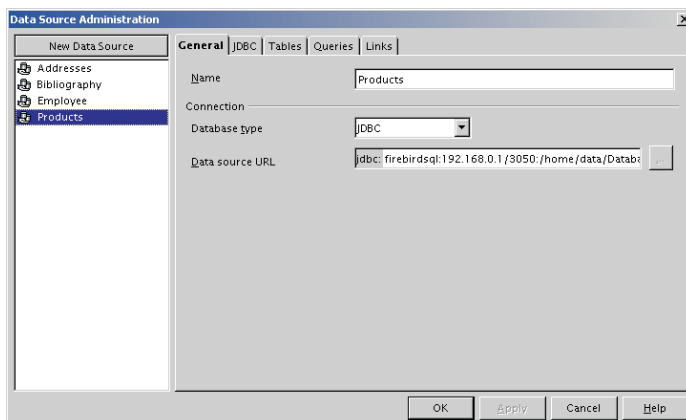


Figure 1.1: Configuring Datasource

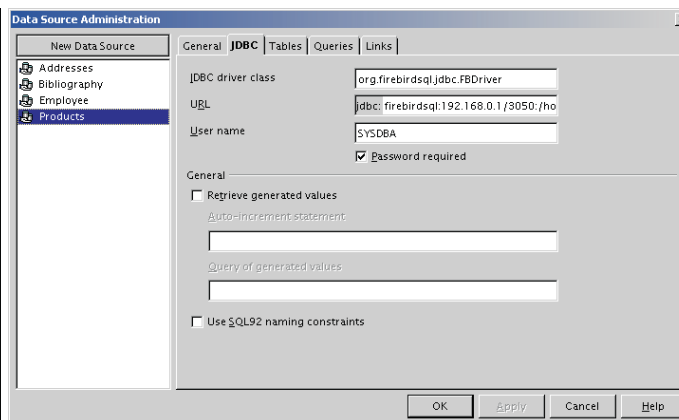


Figure 1.2: Configuring JayBird JDBC

Troubleshooting Guide

This is a short list of troubleshooting techniques to make sure that the components required are functioning.

A simple trick to confirm that correct version of Java has been loaded WITHOUT re-installing all of OpenOffice.

(by Lester Caine)

1. Run OpenOffice.org Setup (in the start menu in OOo)
2. Select Modify -> Next
3. Open Optional Components List
4. Double Click Java Environmental Installation so that it goes to an 'X'
5. Then hit Modify -> Complete
6. Restart OpenOffice Setup
7. Select Modify -> Next
8. Open Optional Components List
9. Double Click Java Environmental Installation so that it goes to a Blue Arrow (to Install it again)
10. When you hit Modify again, the setup screen for the Java environment comes up and you can select the right one.
11. Then Complete again.
12. Correct Java is in use.

Checking the Systems

1. **Make sure Firebird is running.** In Linux issues the following command to check that Firebird is listening on port 3050: `netstat -an | grep 3050`

You should receive the following response and if not check your Firebird installation and startup scripts.

```
tcp 0 0 0.0.0.0:3050 0.0.0.0:* LISTEN
```

2. **Issues with Red Hat.** Red Hat Linux v8.0 and above ships a version of OpenOffice that has java disabled. The easiest way to resolve the problem is to reinstall OpenOffice (from the OpenOffice.org web site).
3. **Windows Issues.** Ensure that in the Data Source URL you use the \\ instead of a single backslash.

Known Bugs

1. **Form Letter crash when data not preloaded**

If you are using the "File | Form Letter" option to import data from a database you will find that it crashes the OOo app when you import 2 or more records.

http://www.openoffice.org/issues/show_bug.cgi?id=2529

Copyright (c) 2001 by Darcy S. O'Neil (dso@methyl.ca)

Licensed under the GNU Free Documentation License (<http://www.fsf.org/copyleft/fdl.html>)

Please feel free to copy and distribute this document in any format. It is requested that corrections and/or comments be forwarded to the document maintainer (Darcy O'Neil). You may create a derivative work and distribute it provided that you:

1. Send your derivative work (in the most suitable format such as rtf) to Darcy O'Neil at dso@methyl.ca or post changes on the Internet.
2. License the derivative work under the GNU Free Documentation License. Include a copyright notice and at least a pointer to the license used
3. Give due credit to previous authors and major contributors.

If you're considering making a derived work other than a translation, it is requested that you discuss your plans with the current maintainer(s).

Resources:

IBPhoenix (www.ibphoenix.com) provides support for Firebird and Interbase databases and their site has an excellent library of user documents and How To's...

OpenOffice - Database Access Project You can find and report bugs to the OpenOffice development team regarding data access at the following site. Also, this section has a number of helpful how to's... and other documents. <http://dba.openoffice.org>

News Groups

news.atkin.com Server hosts the firebird news groups.

[egroups.ib-java](http://egroups.ib-java.com) - JDBC & Java questions and support
[egroups.ib-support](http://egroups.ib-support.com) - General Firebird support

OpenOffice Forum - The place for OOo questions
<http://www.ooforum.org>

Additional Tools for Firebird Development

IBExpert (www.ibexpert.com)

This is an excellent tool to manage Firebird (or Interbase) databases. Create, modify and update almost every aspect of your database. A Free 30 day Trial Version is available at: <http://www.ibexpert.com/download>

About Methyl

Methyl is a Linux based business located in London, Ontario (Canada). We provide services relating to open source software including file server configuration (Samba), desktop deployment (Linux & OpenOffice) and database development. www.methyl.ca or dso@methyl.ca

 OpenOffice.org 1.0

 methyl.



Firebird